



Lublin University of Technology, LUT Lublin, Poland

Dr. Marek Milosz

Film:

<https://www.youtube.com/watch?v=lsHsjwc2UMY>

Lublin University of Technology

- 1953 - **Evening Engineering School**
with one faculty: Faculty of Mechanical Engineering
- 1963 - Electrical Engineering Faculty was established
- 1964 - Faculty of Building Engineering
- 1965 - Evening Engineering School → **High Engineering School**
- 1977 – **Lublin University of Technology**
- State (government) university



Civil Engineering and
Architecture Faculty



Mechanical Engineering
Faculty



Fundamentals of
Technology Faculty
Site in Polish



Electrical Engineering and
Computer Science Faculty



Environmental Engineering
Faculty



Management Faculty

LUT structure - Faculties

- Civil Engineering and Architecture Faculty
- Electrical Engineering and Computer Science Faculty
- Mechanical Engineering Faculty
- Environmental Engineering Faculty
- Fundamentals of Technology Faculty
- Management Faculty

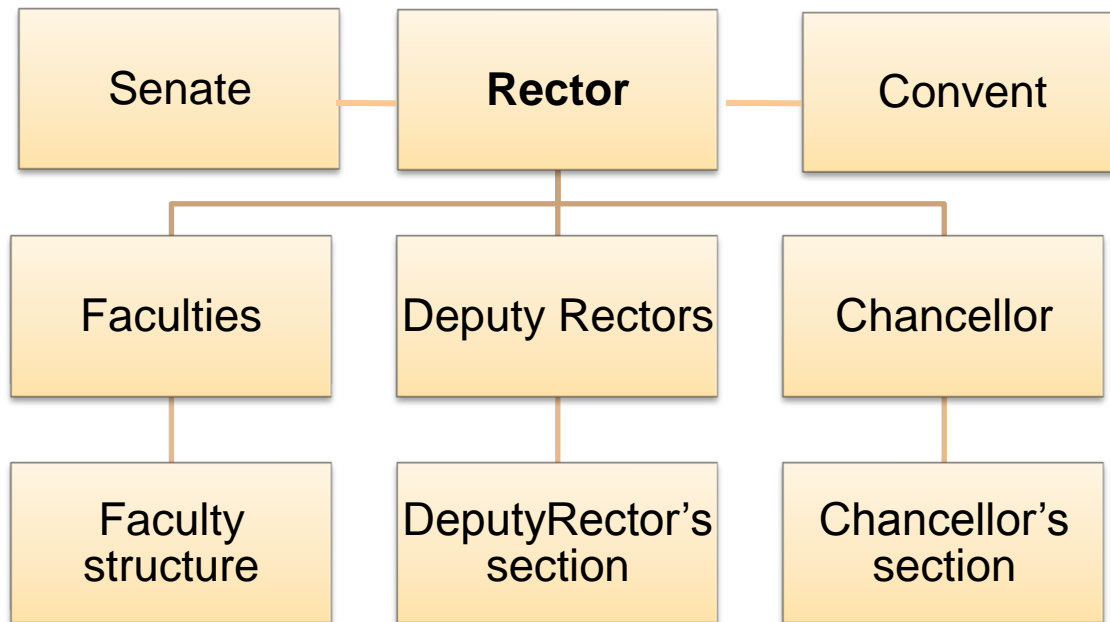
LUT in numbers

- Present:
 - +10,000 students (incl +700 from abroad and +170 PhD students)
 - +1,000 staff (incl. +560 academic teachers)
 - +100 full professors
- +50,000 graduated students
- 19 different study programs with several specialisations
- Levels: 1st (BSc/Eng.), 2nd (MSc) and 3rd (PhD) (7, 3 and 6 semesters)

Study Programs

- Biomedical engineering
- Material Engineering
- Manufacturing Engineering
- Mechanical engineering
- Mechatronics
- Transport
- Electrotechnics
- **Informatics**
- Architecture
- Construction
- Renewable Energy Sources Engineering
- Environmental engineering
- IT education
- Maths
- Safety Engineering
- Finance and Accounting
- Marketing and Market Communication
- Management
- Management and production engineering

Organizational chart - general



Senate - composition

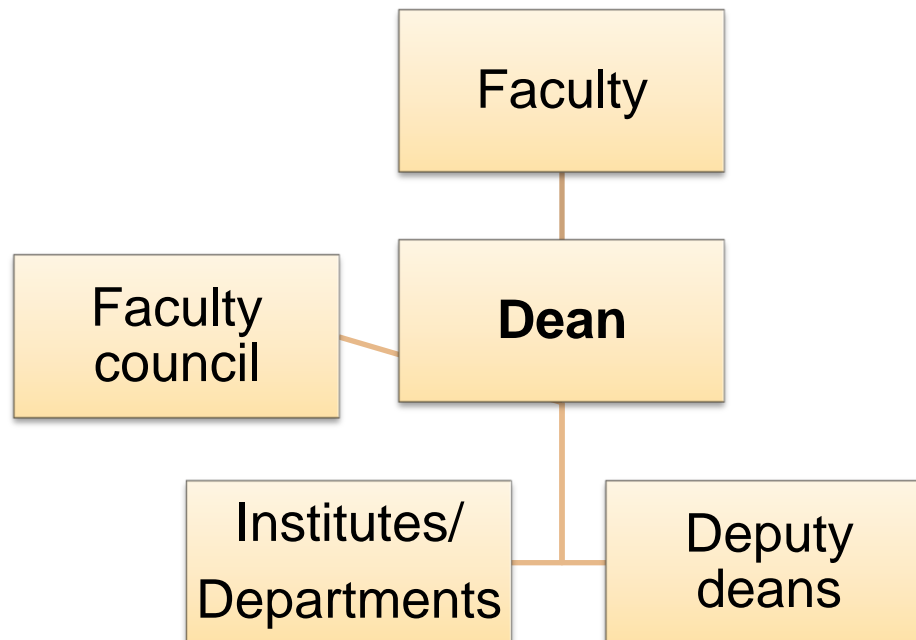
- By the law (Statute of LUT): all Rectors and Deans - > **10**
- Elected by LUT staff/students from groups of:
 - Prof. -> **12**
 - Other academic staff -> **7**
 - Non academic staff -> **3**
 - Students -> **8**

Deputy Rectors

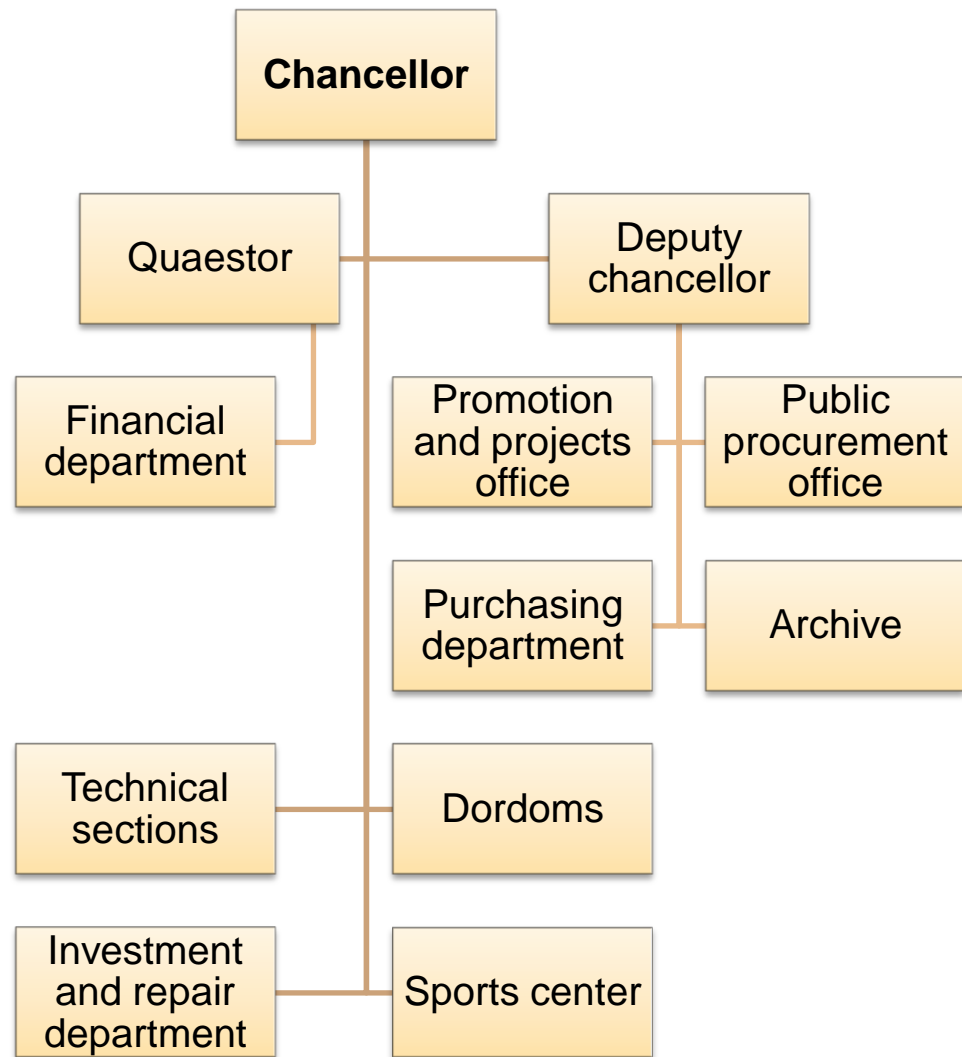
- Deputy Rector for Science
- Deputy Rector for Student Affairs
- Deputy Rector for cooperation with the socio-business environment

- Has **own sections** according to their areas of activities

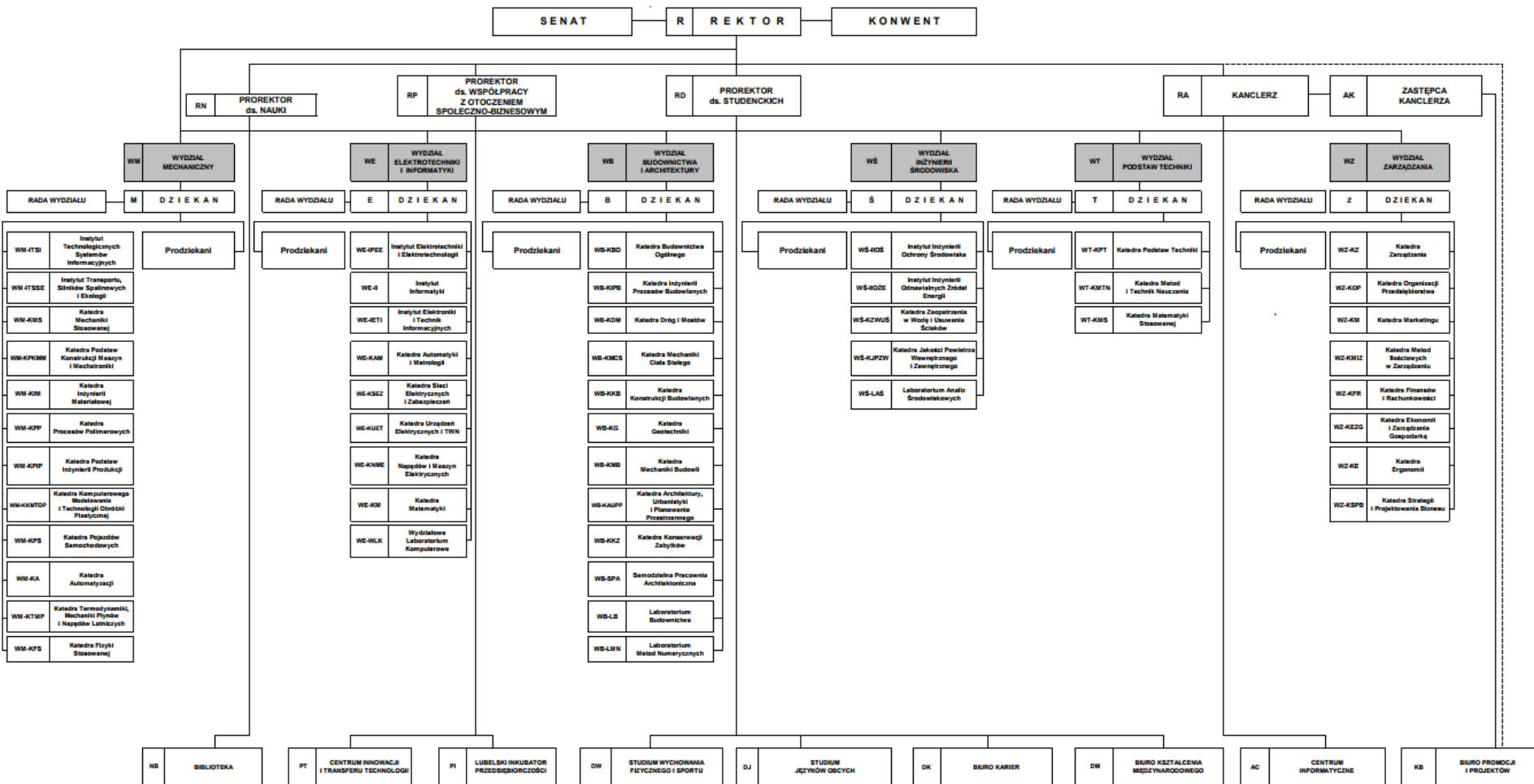
Organizational chart - Faculties



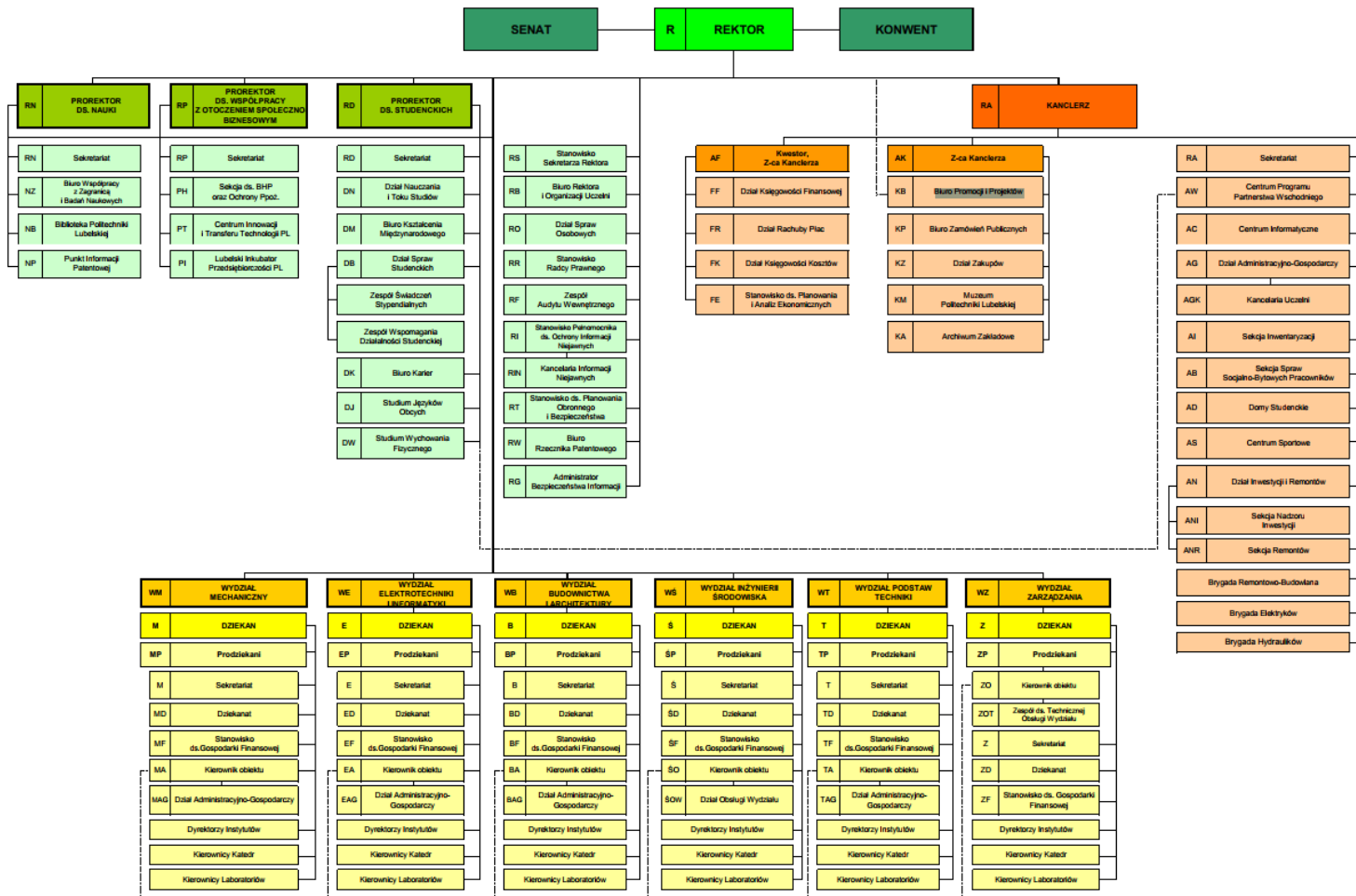
Organizational chart – chancellor's section



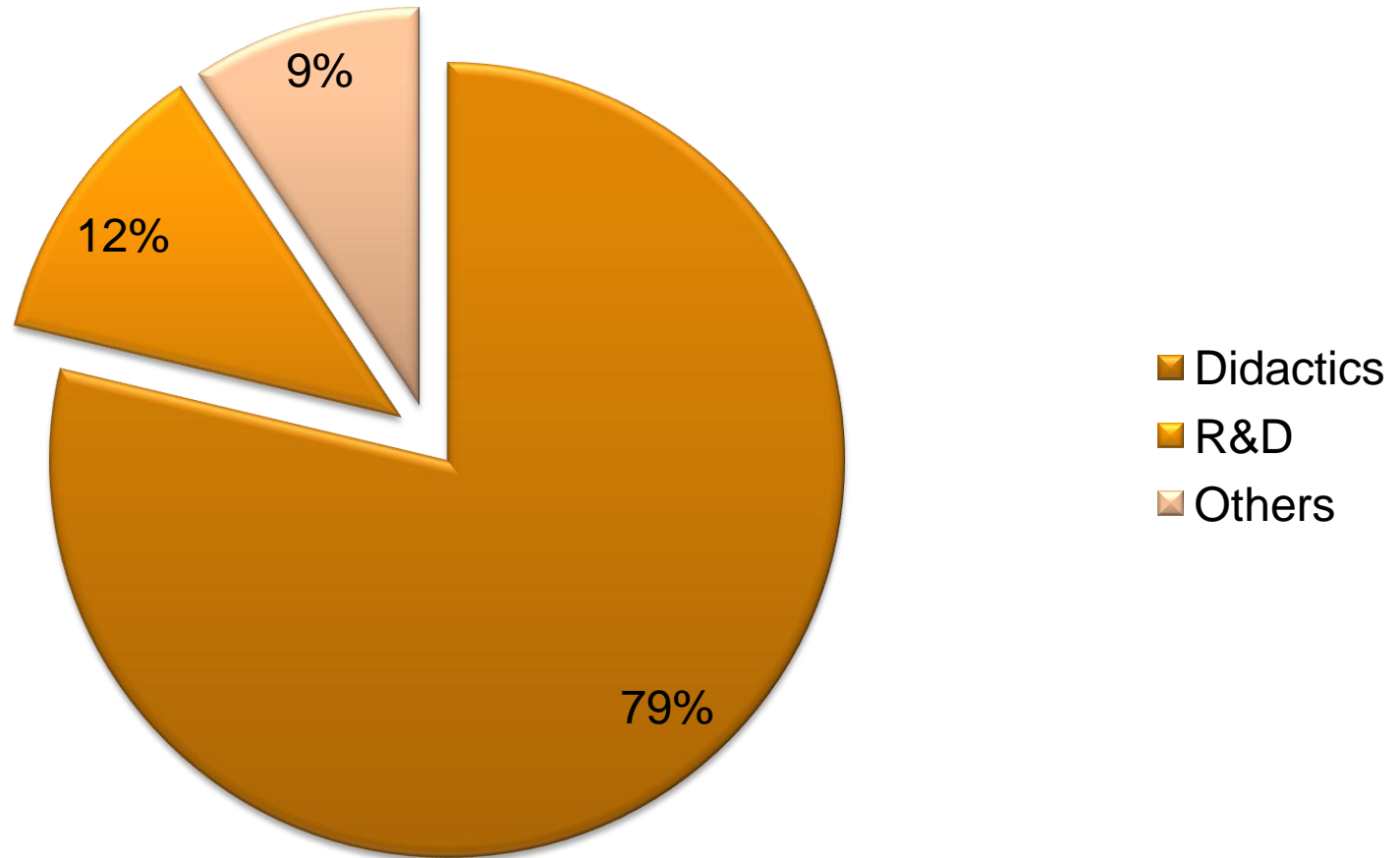
Organizational chart – real academic



Organizational chart – real administrative

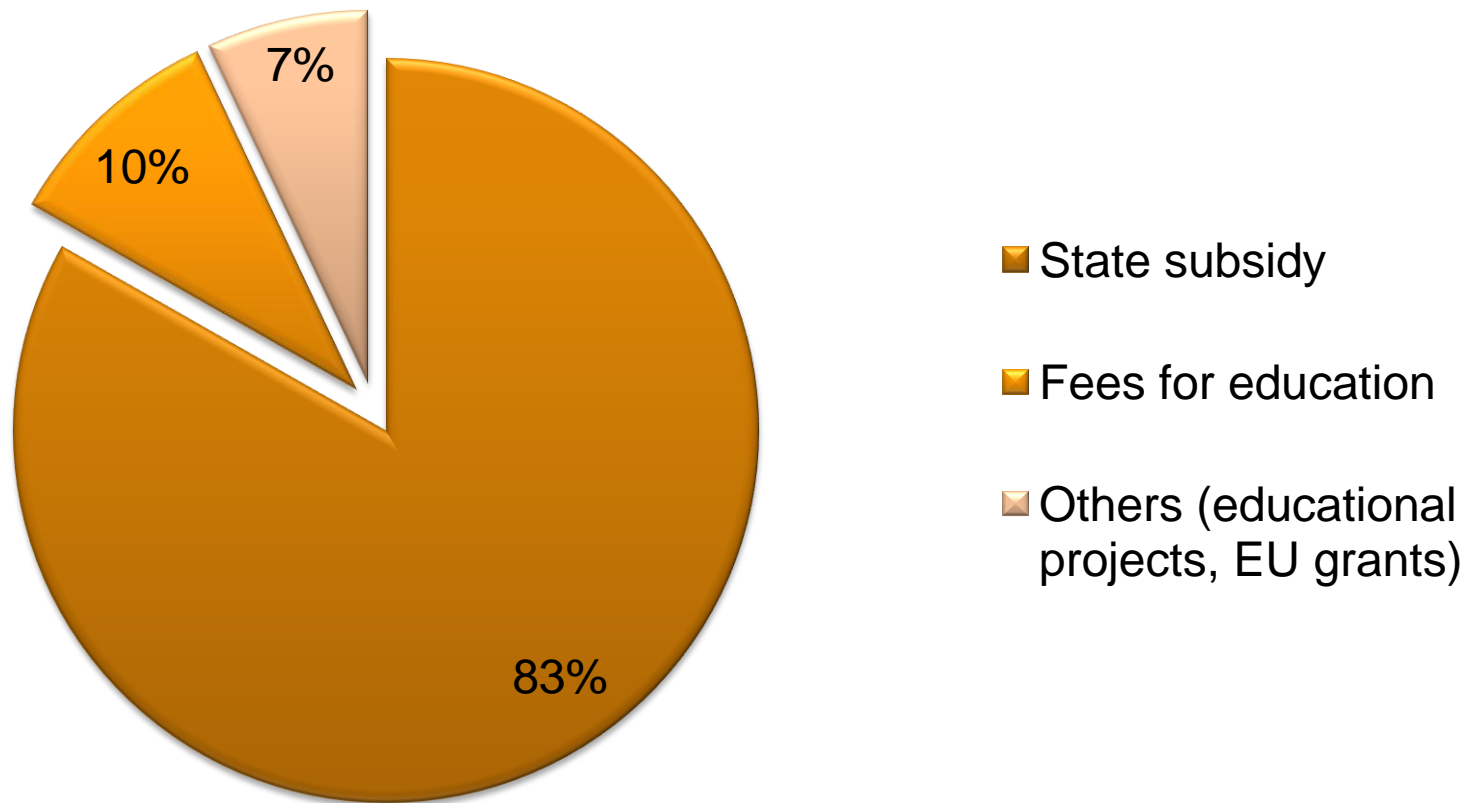


LUT budget (2016) - realization

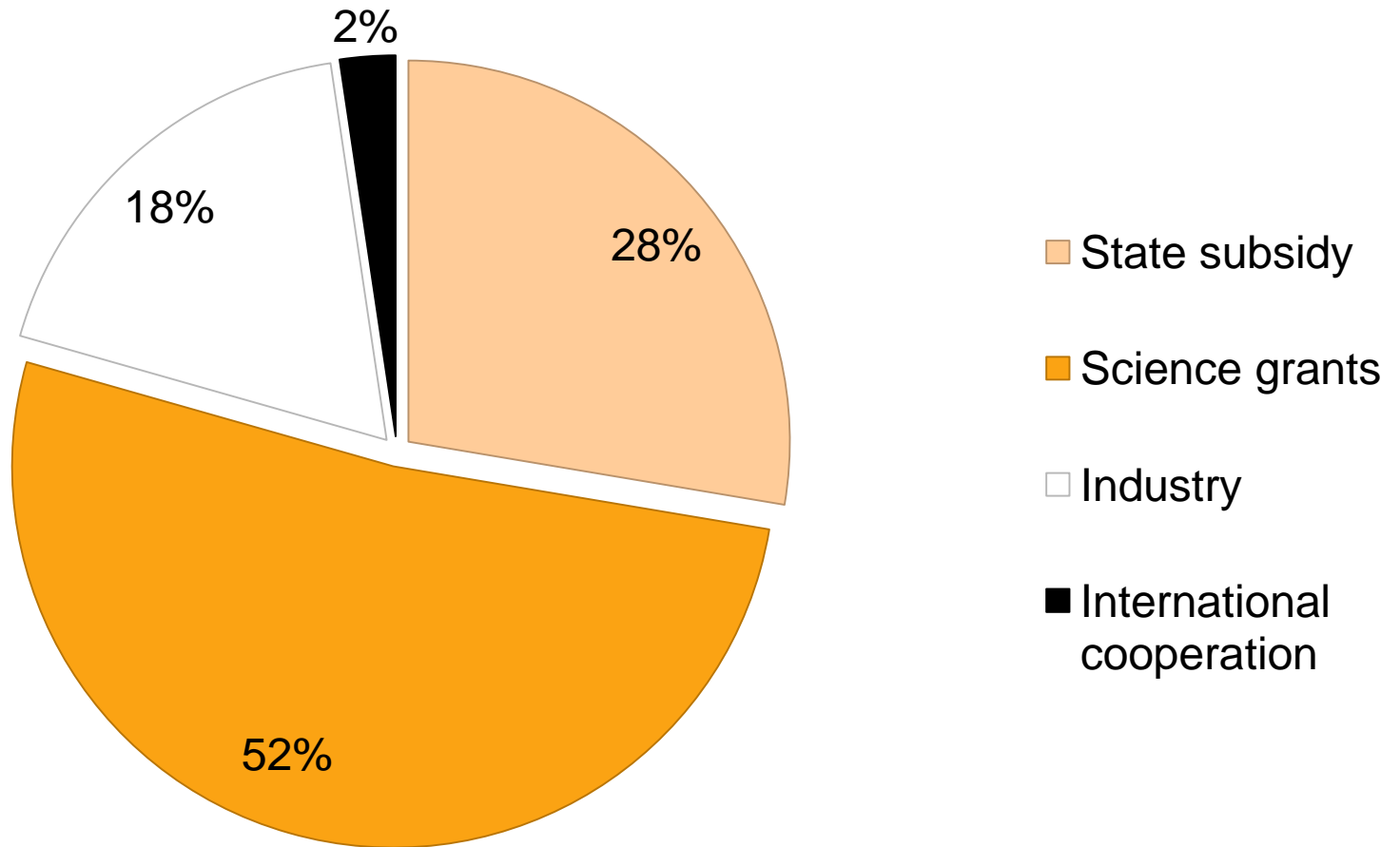


Total budget: +34 mln EUR

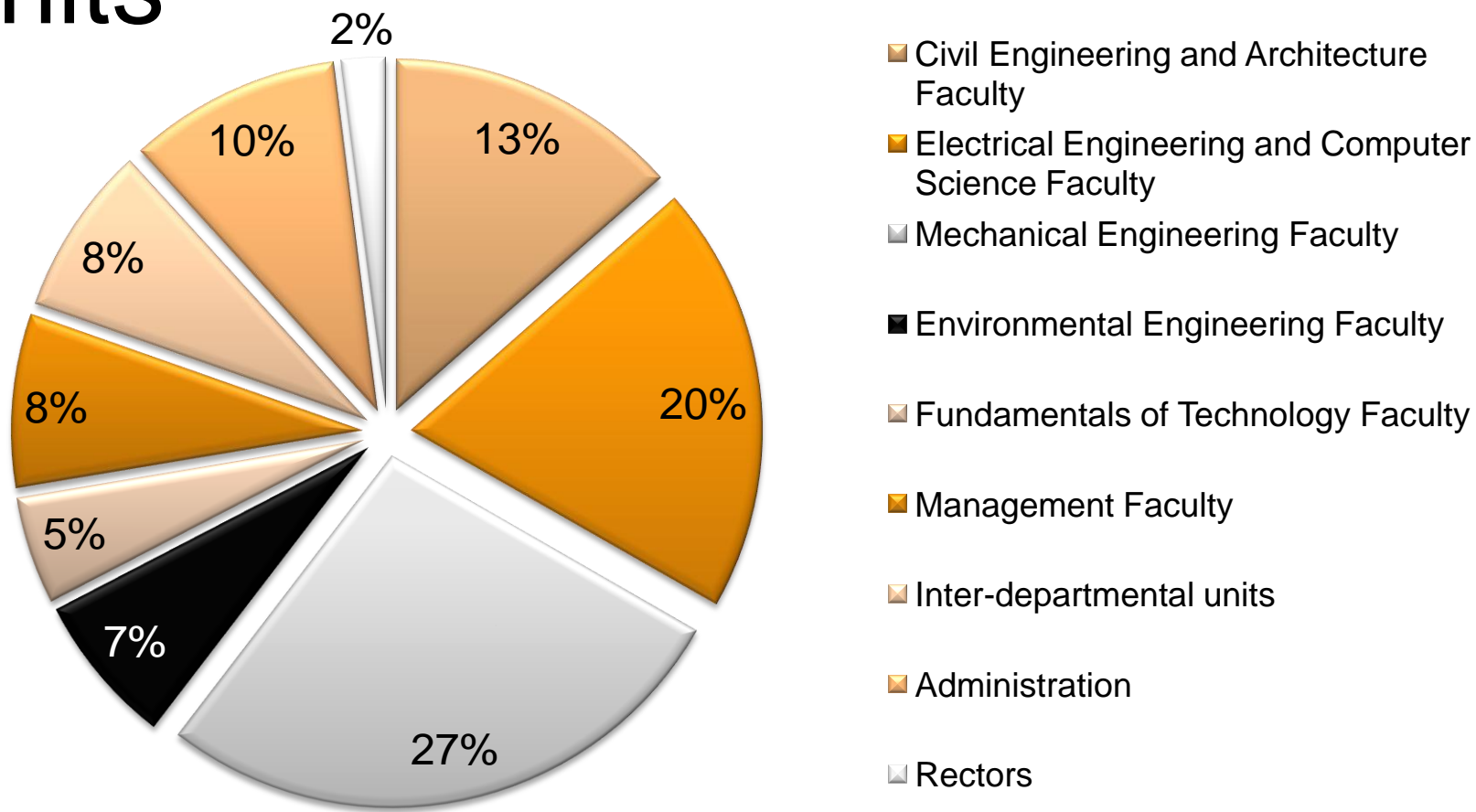
LUT budget - Didactics



LUT budget – R&D



LUT budget – distribution into units



Academic Management - rules

- Internal Quality Assurance System of Education
- A resolution on the principles of creating and abolishing the first and second degree programs as well as guidelines for faculty councils in the design of study plans and programs at the Lublin University of Technology (Senate, 29.10.2015)
- Periodic verification by the ministry - accreditation

Academic Management – 2 different ways


- Depends on Faculty status
- Faculties with highest scientific status (4 faculties of LUT) can create new educational programs by themselves without any external (ministry) permissions
- Other Faculties – need approval of the program by the ministry

Students recruitment – rules

- **Polish students** – an algorithm uses the results of the matura exam (unified state exam) via IT system; quota vs. list of candidates and its points; manage by Faculty
- **Foreign students** – special rules, manage by International Exchange Office and Rectors Office

Students recruitment – realization

- IT system for candidates
- Admission committee on Faculty level
- Well-defined administrative procedures supported by IT systems
- Some additional preferences for winners of thematic competitions



Thank you
for your attention



Lublin University of Technology, LUT Lublin, Poland

Dr. Marek Milosz

Autonomy Ministry vs. University

Ministry influence

